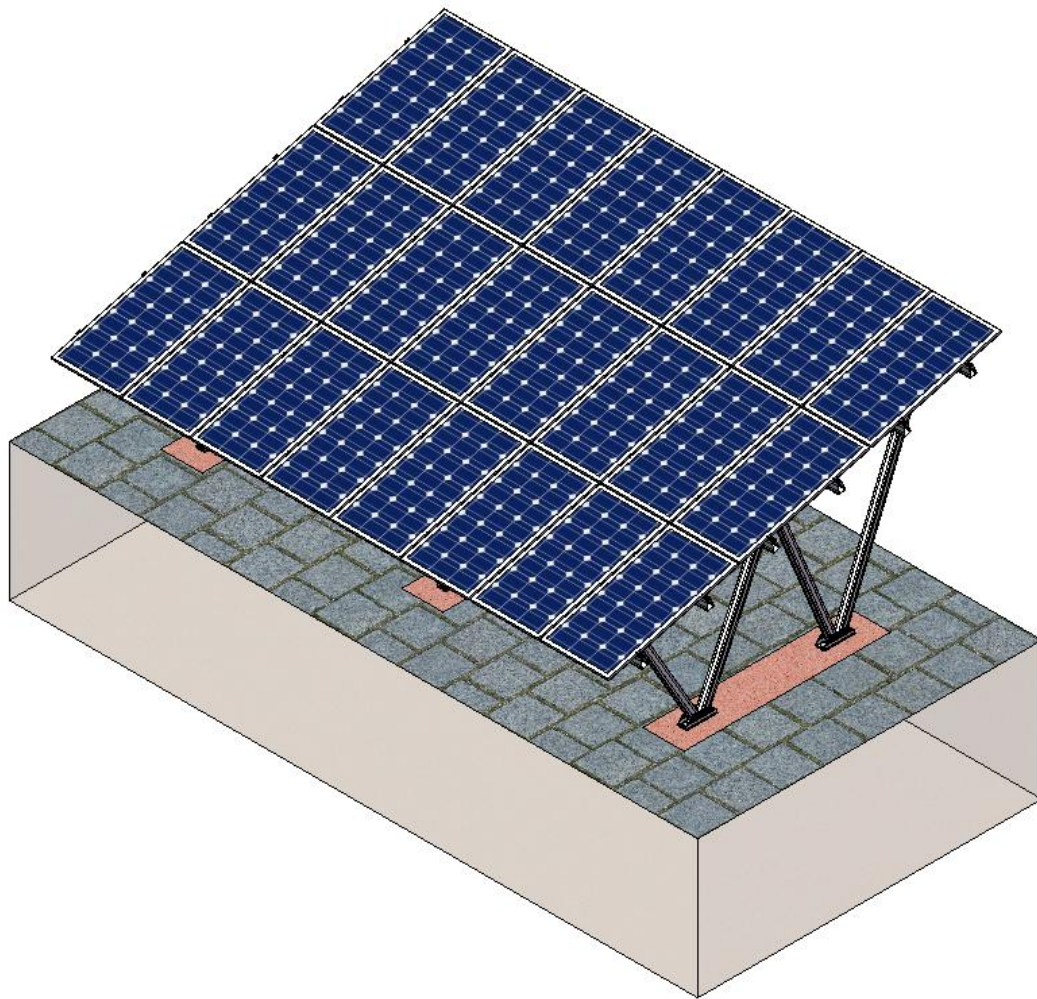
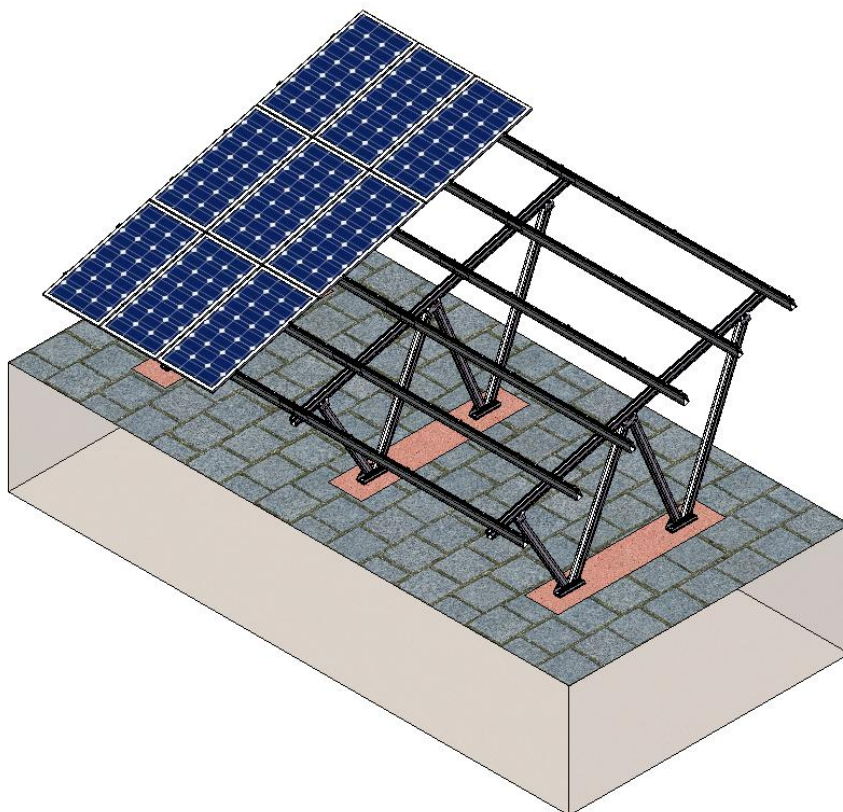

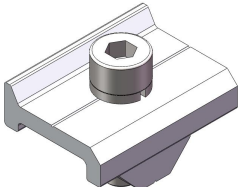
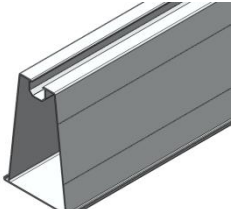
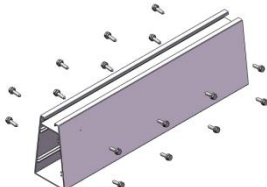
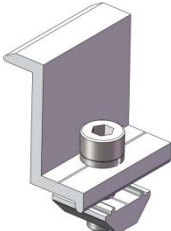
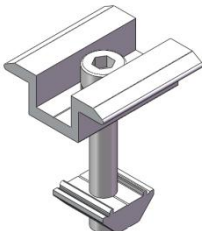

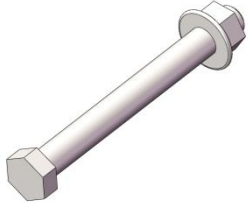


Installation Manual



一. System Compositions

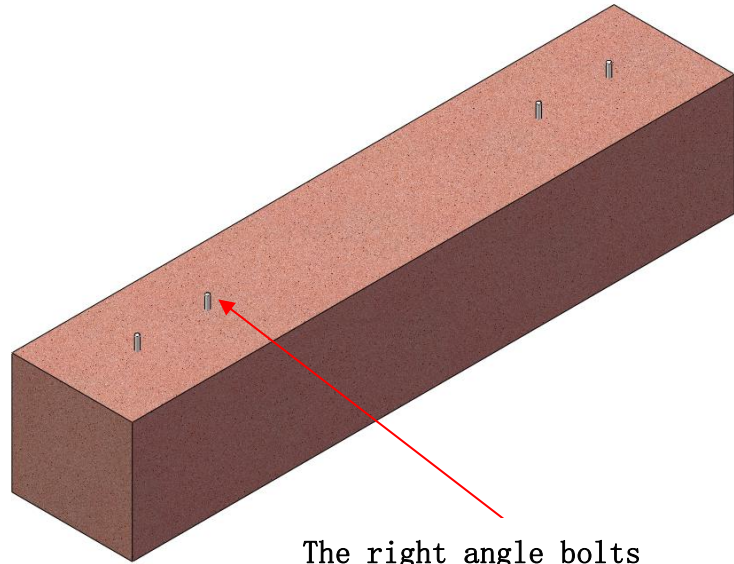


Components List			
			
1. Pre-assembled Mounting System	2. Rail Clamp	3. Rail	4. Splice for Rail
			
5. End clamp	6. Inter clamp	7. Right Angle Bolt	8. Hexagon bolt M16X150

二. Installation Instructions

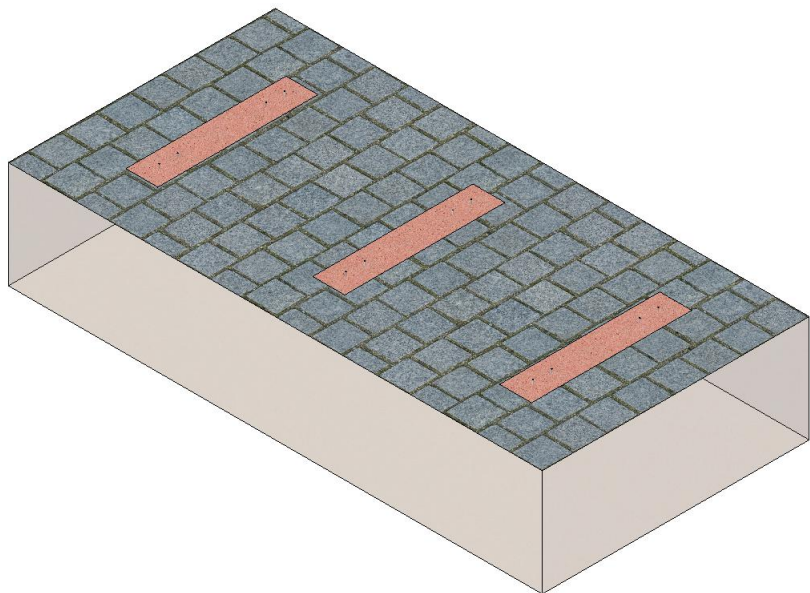
1. Prepare

1. Used tools to mark the location, marking the embedded position of each cement foundation, then the cement foundation was poured (according to the size of drawing), and the right angle bolts head was exposed for 60mm



The right angle bolts
exposed 60mm

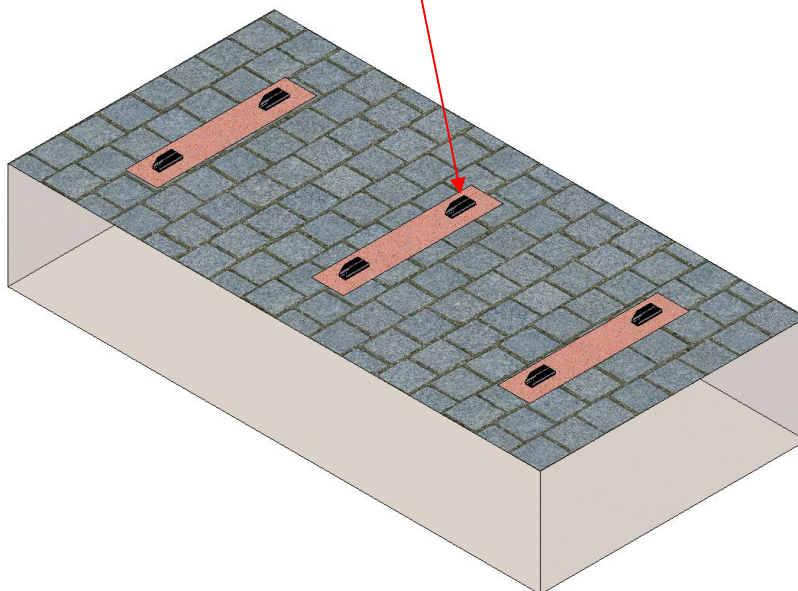
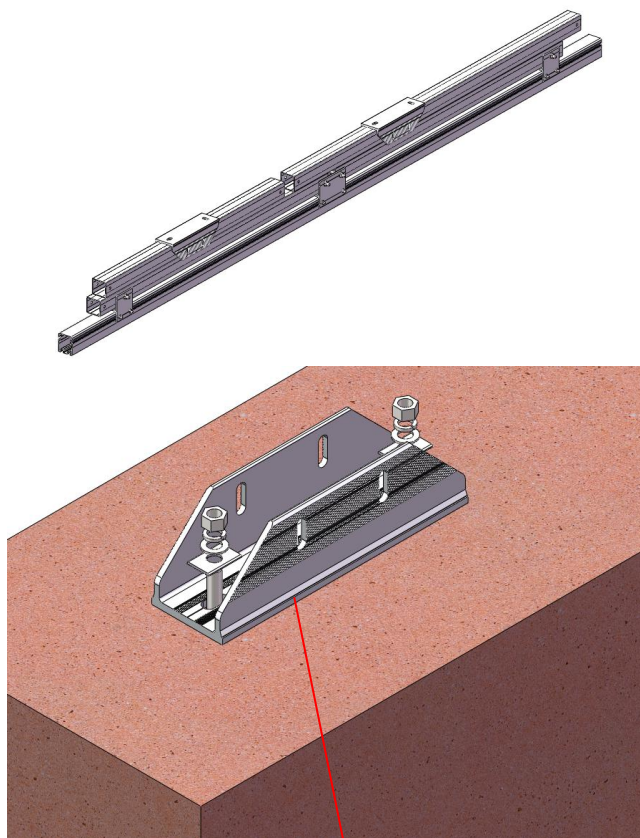
2. When a cement foundation is embedded, it must be ensured that the end face of cement foundation is on the same line and height. The span of each cement foundation shall be determined according to the size of drawing



2. Install the Pre-assembled Mounting System

1. As shown in the right picture, put the base which is in the pre-assembled mounting on the embedded cement foundation and lock it preliminary with M20 hexagon bolt, M20 spring, M20 washer and gasket.

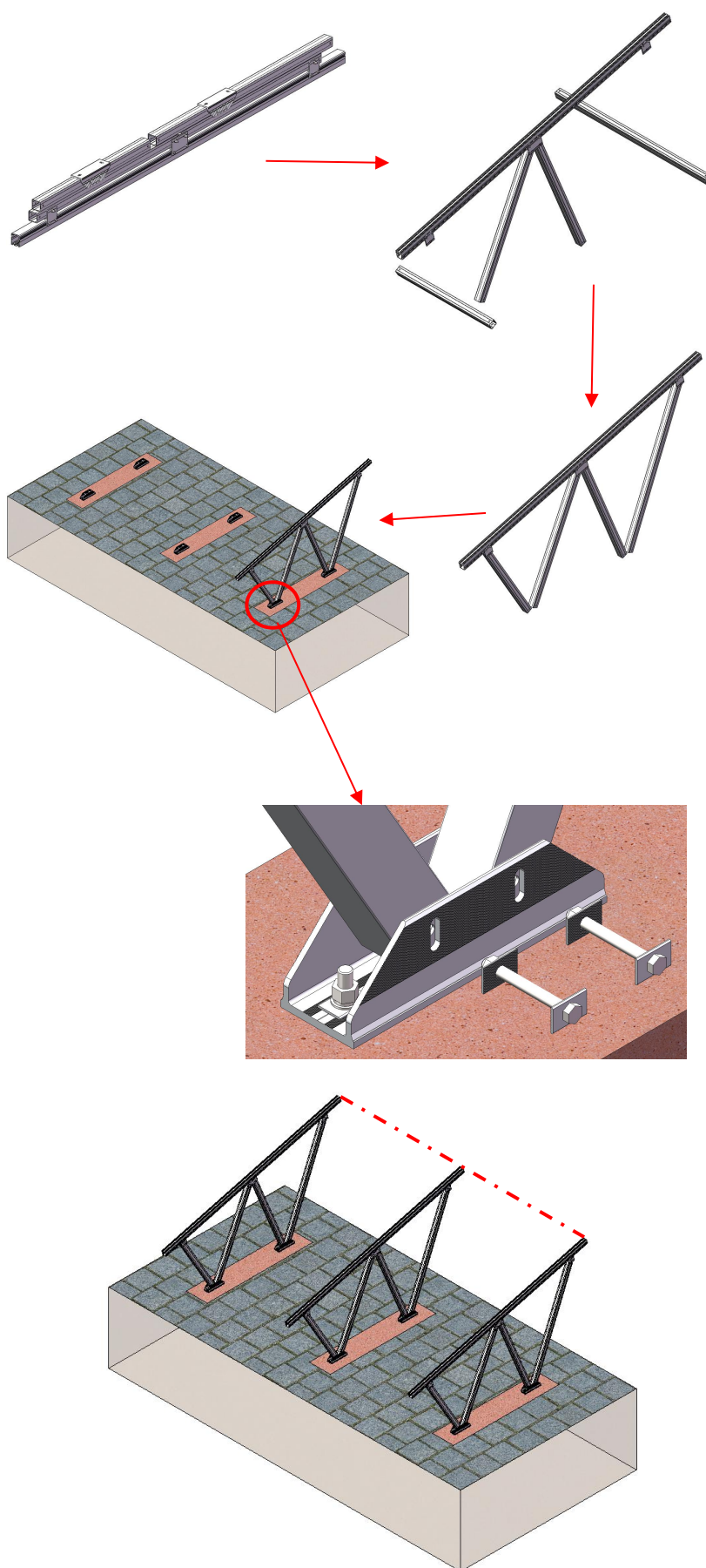
2. Second, used the same way to install all the base on the embedded cement foundation.



3. Expand the pre-assembled mounting system and install other columns, connect them with the **M16*150 hexagonal bolt** and **M16 flange nut**, and lock them preliminary

4. Next, install the pre-assembled mounting on the base, connect it with **M16*150 hexagon bolt**, **M16 flange nut** and **gaskets**, then lock them preliminary

5. Finally, please ensure the pre-assembled mountings in the same line, and lock them tightly.

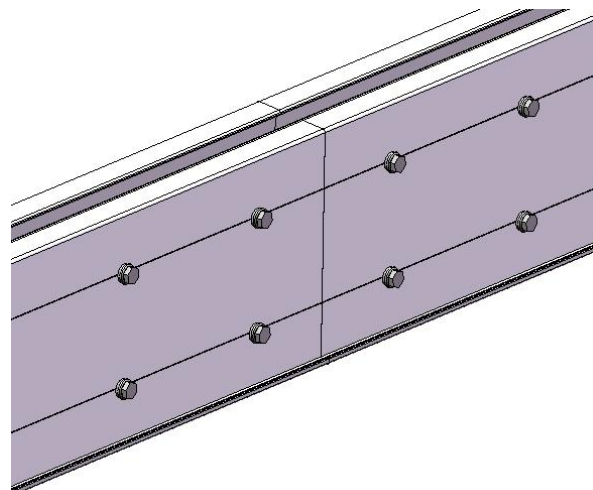
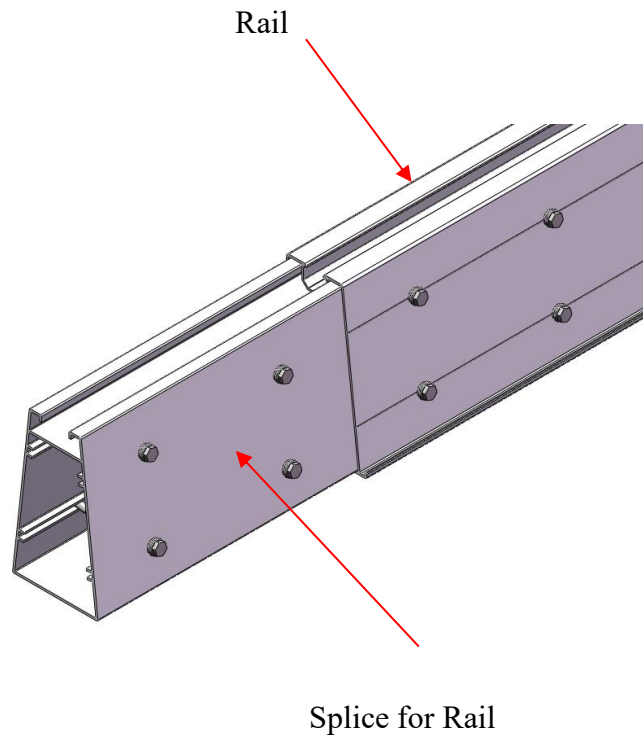


3. Install Rail

Before installing the rail, please confirm the length of the required rail. If the length is not enough, connect with the splice for rail.

1. Insert the splice for rail into the rail. After adjusting the position, use eight self-tapping screws (four on each side of the rail) to securely lock. (16 screws total.)

2. Connect another rail in the same way as above, and connect it as shown on the right.

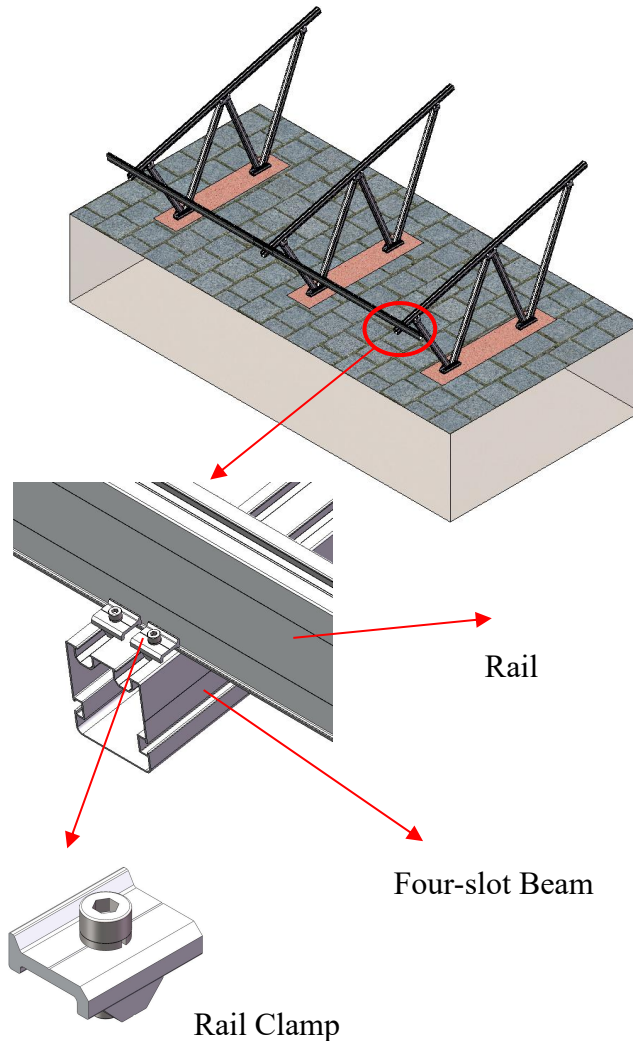


3. Place the rail on the beam, and adjust the position according to the size of drawing, as shown on the right

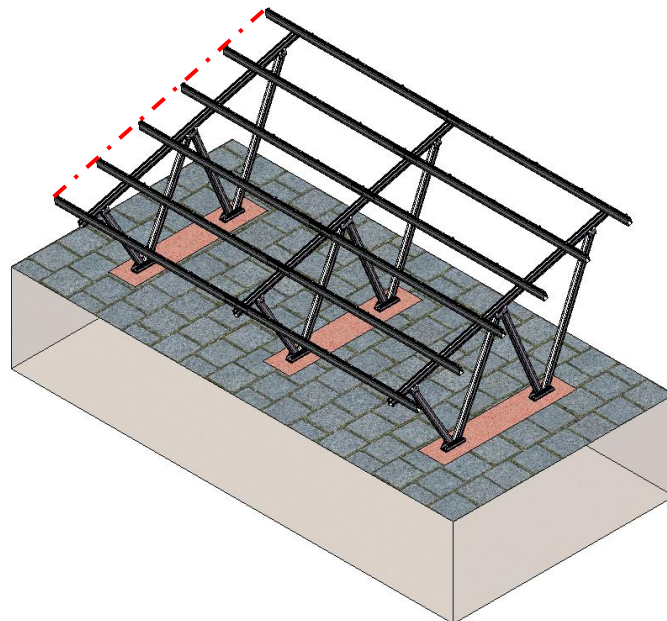
4. Use the rail clamp to fix the rail on the four-slot beam and ensure locking well.

Notice:

The rail clamps are two on each side of the rail.

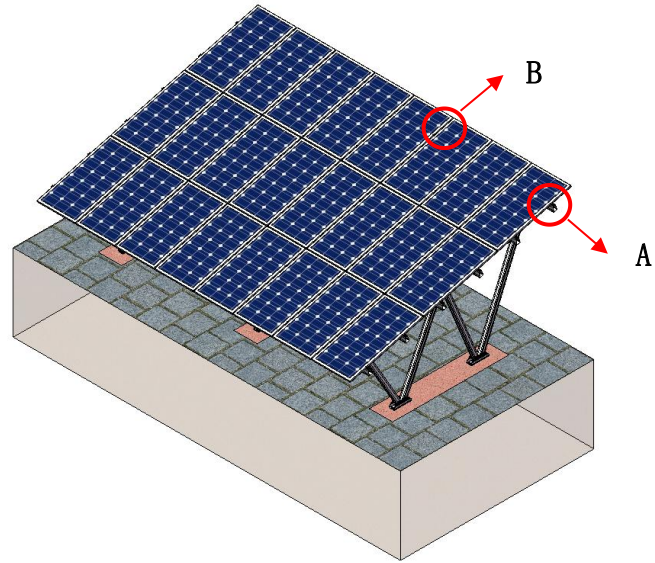


5. Repeat the above step and install the remaining rail according to the design drawings. Please keep the end of each rail (marked with red line)



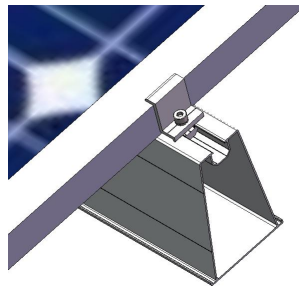
4. Install solar panel

1. Install the solar panels from one end of the rail to the other as the design drawings.

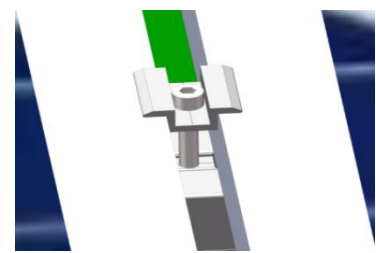


2. Use the end clamp to fixed solar panel, the two solar panels are fixed by mid clamp.

A: End clamp



B: Mid clamp



3. Complete the installation, the overall effect is as shown on the right.

